

## Images in Cardiology

### A Case of Right Atrial Mass

AKMM Islam<sup>1</sup>, SA Begum<sup>2</sup>, AAS Majumder<sup>1</sup>

<sup>1</sup>Department of Cardiology, National Institute of Cardiovascular Diseases, Dhaka. <sup>2</sup>Department of Radiology & Imaging, Bangladesh Institute of Research and Rehabilitation in Diabetes, Endocrine and Metabolic Disorders, Dhaka.

(*Cardiovasc. j.* 2012; 5(1): 123-124)

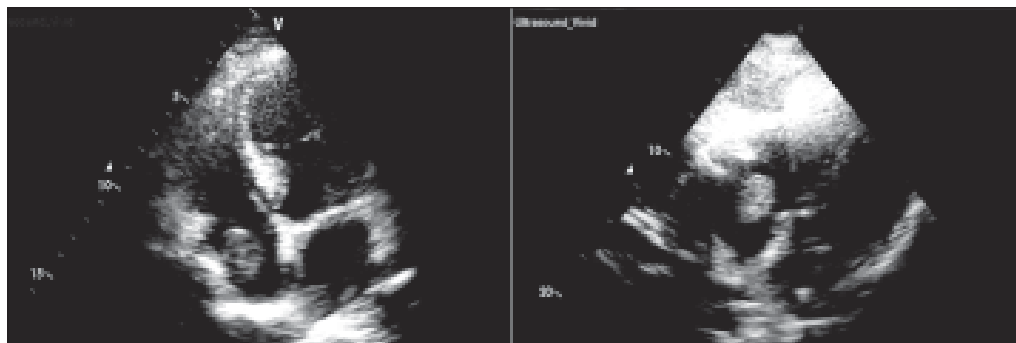
A 70-year-old man with histologically proven hepatocellular carcinoma (HCC) (Figure 1, left panel) was sent for echocardiography before chemotherapy. Transthoracic echocardiography revealed an echogenic mass of about 4.2 cm<sup>2</sup> in the right atrium which was moving to and fro with different phases of cardiac cycle (Figure 2, left panel). No definite stalk could be identified. Careful review of ultrasonography demonstrated a smaller echogenic mass in the terminal part of inferior vena cava. (Figure 1, right panel) In the context of HCC, the right atrial mass is likely to be an intracardiac metastasis; however it was not proved by biopsy.

The primary tumour most frequently involving the right heart is renal cell carcinoma (about 4-10% cases)<sup>1</sup>, followed by carcinoma of the thyroid, testicular tumors and then HCC<sup>2</sup>. HCC spreads most frequently to the lungs, peritoneum, adrenal glands and bones.<sup>2</sup> Intracavitary cardiac extension or metastasis by HCC is uncommon, and has been reported in few cases.<sup>3-7</sup>

The prognosis of HCC with intracardiac involvement is poor, with a median survival range of 1 to 4 months.<sup>3</sup> Surgery or thalidomide may be used for palliation.<sup>3,6,7</sup>



**Fig-1:** Ultrasonogram of liver showing the hepatocellular carcinoma mass in the right hepatic lobe (left panel), and a likely metastatic mass in the inferior vena cava (right panel).



**Fig-2:** The echogenic mass in the right atrium in apical 4-chamber view (left panel), and the same mass protruding across the tricuspid valve in subcostal 4-chamber view (right panel).

**Address of Correspondence :** Dr. AKM Monwarul Islam, Department of Cardiology, National Institute of Cardiovascular Diseases, Dhaka, Bangladesh. email: drmonwarbd@yahoo.com

**Reference:**

1. Laurent Zini, Stéphan Haulon, Christophe Decoene, et al. Renal cell carcinoma associated with tumor thrombus in the inferior vena cava: Surgical strategies. *Ann Vasc Surg* 2005;19:522-8.
2. Giovanna Masci, Massimo Magagnoli, Andrea Grimaldi, et al. Metastasis of hepatocellular carcinoma to the heart: A case report and review of the literature. *Tumori*. 2004;90:345-7.
3. Chang JY, Ka WS, Chao TY, Liu TW, Chuang TR, Chen LT. Hepatocellular carcinoma with intra-atrial tumor thrombi. A report of three cases responsive to thalidomide treatment and literature review. *Oncology* 2004;67:320-6.
4. Ho M, Lee C, Tsai K, Huang Y, Yo C. Hepatocellular carcinoma with invasion into the right atrium: A case report. *J Emerg Crit Care Med* 2011;22(3):112-4.
5. Jeong DS, Sung Kim J, Kim KH, Ahn H. Left atrial metastasis from hepatocellular carcinoma with liver cirrhosis. *Interact Cardiovasc Thorac Surg* 2010;11:703-5.
6. Sung AD, Cheng S, Moslehi J, Scully EP, Prior JM, Loscalzo J. Hepatocellular carcinoma with intracavitary cardiac involvement: A case report and review of the literature. *Am J Cardiol* 2008;102:643-5.
7. Lin YS, Jung SM, Tsai FC, Yeh CN, Shiu TF, Wu HH, et al. Hepatoma with cardiac metastasis: An advanced cancer requiring advanced treatment. *World J Gastroenterol* 2007;13:3513-6.